

- Project Area
- Mapped Soils

Data: USDA NRCS, 2019
 Base Map: NYS Office of Information Technology Services,
 GIS Program Office, 2018; Esri and its contributors

0 2,800
 Feet

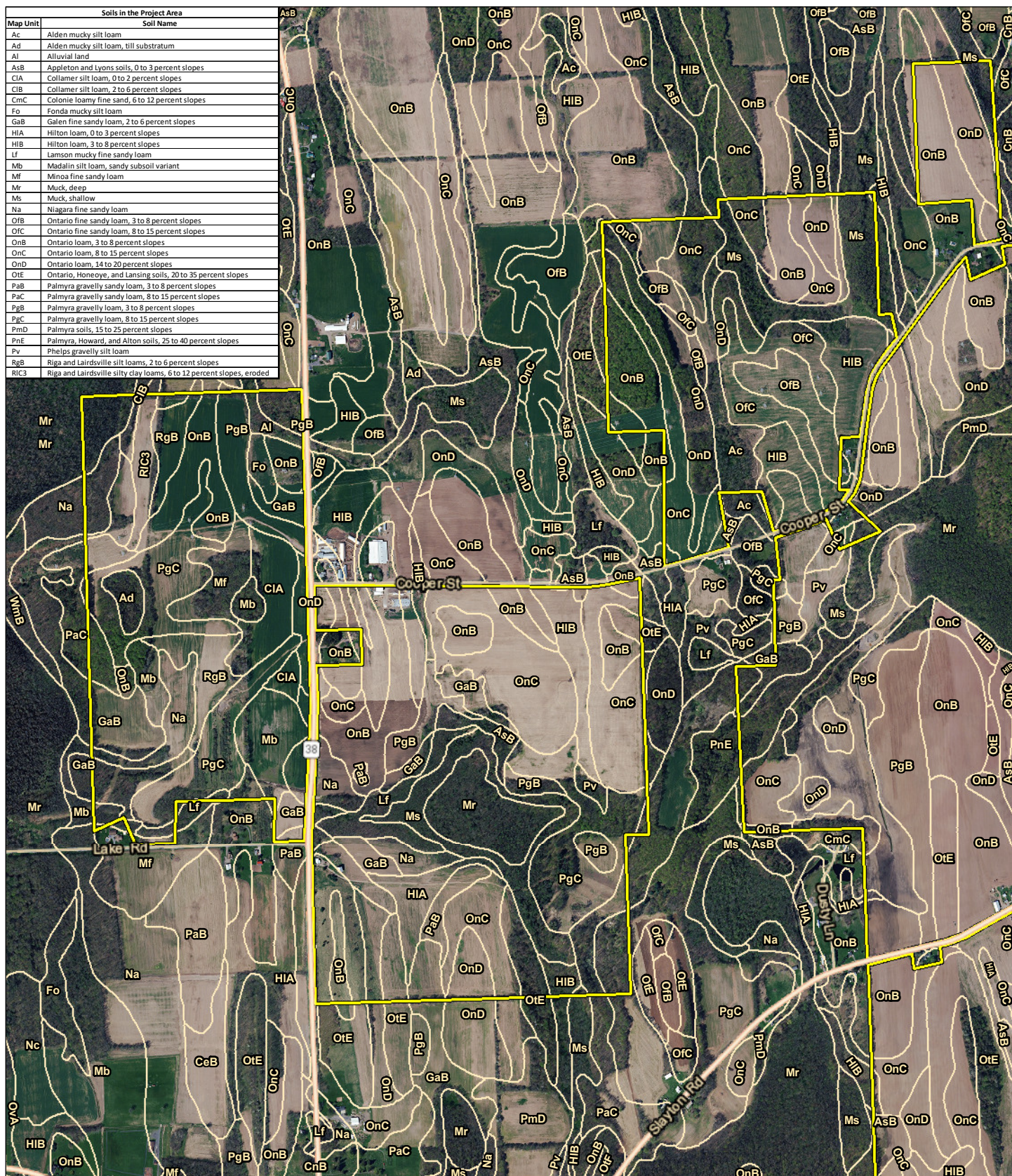
MAP LOCATION



MAPPED SOILS IN THE PROJECT AREA GARNET ENERGY CENTER, LLC TOWN OF CONQUEST SHEET 1 OF 4

FIGURE 8 SEPTEMBER 2020

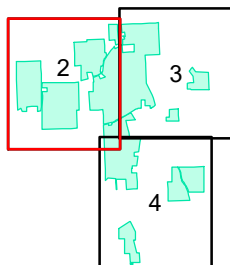
Map Produced by TRC



Project Area
 Mapped Soils

0 1,250 Feet

Data: USDA NRCS, 2019
 Base Map: NYS Office of Information Technology Services,
 GIS Program Office, 2018; Esri and its contributors



MAP LOCATION

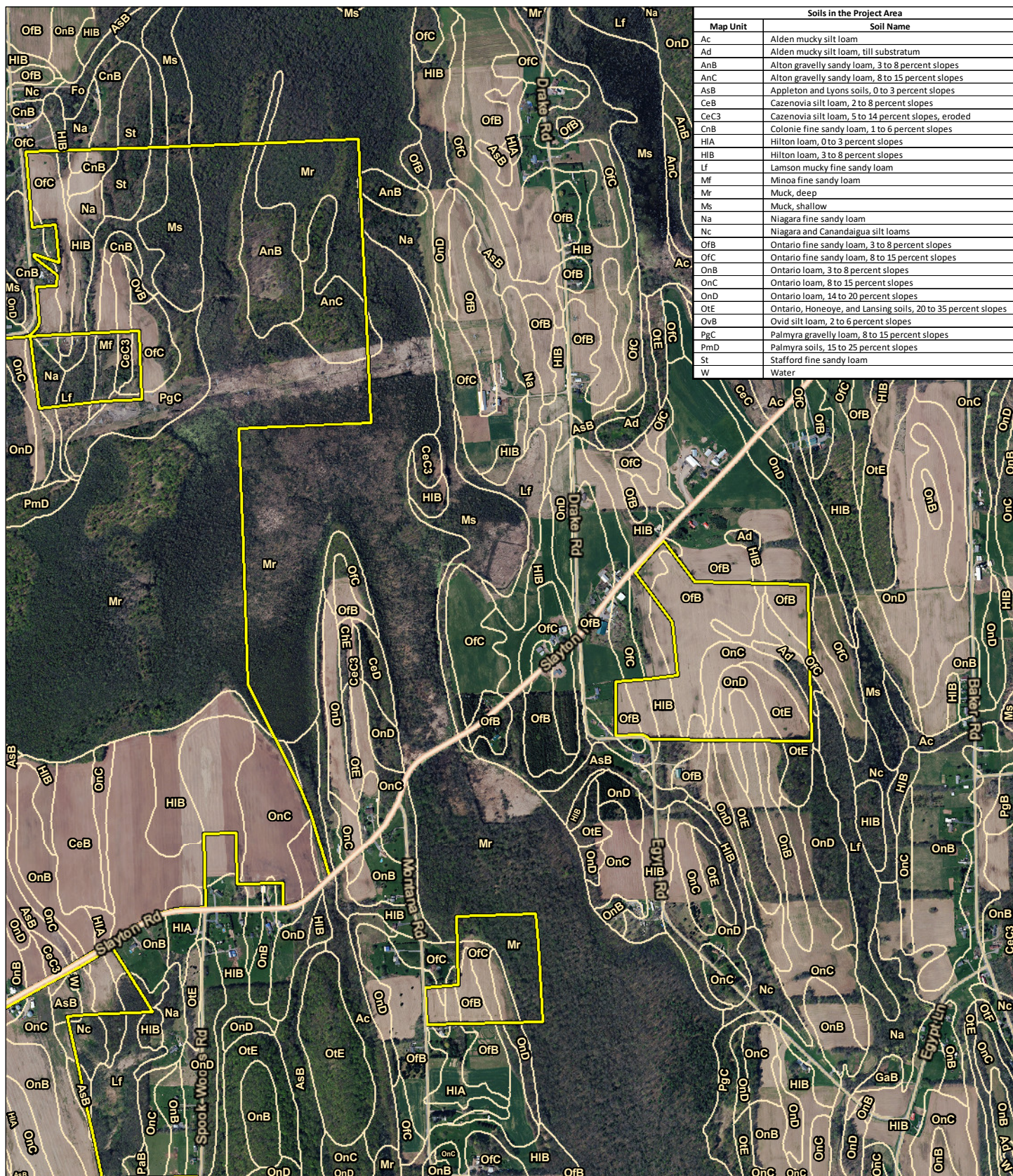


NEXTERA
 ENERGY
 RESOURCES

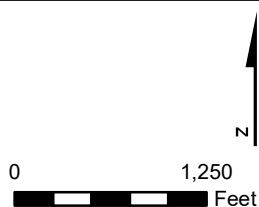
**MAPPED SOILS
 IN THE PROJECT AREA**
GARNET ENERGY CENTER, LLC
TOWN OF CONQUEST
SHEET 2 OF 4

FIGURE 8 SEPTEMBER 2020

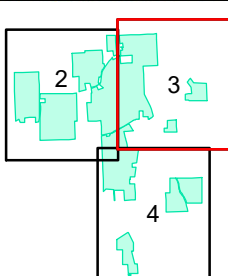
Map Produced by TRC



Project Area
 Mapped Soils



Data: USDA NRCS, 2019
 Base Map: NYS Office of Information Technology Services,
 GIS Program Office, 2018; Esri and its contributors



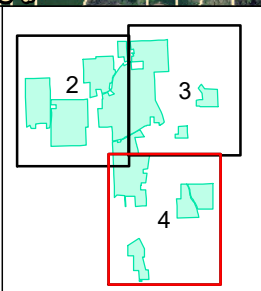
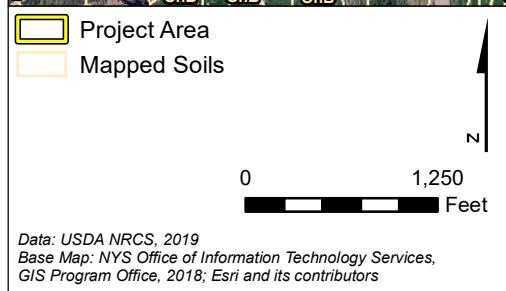
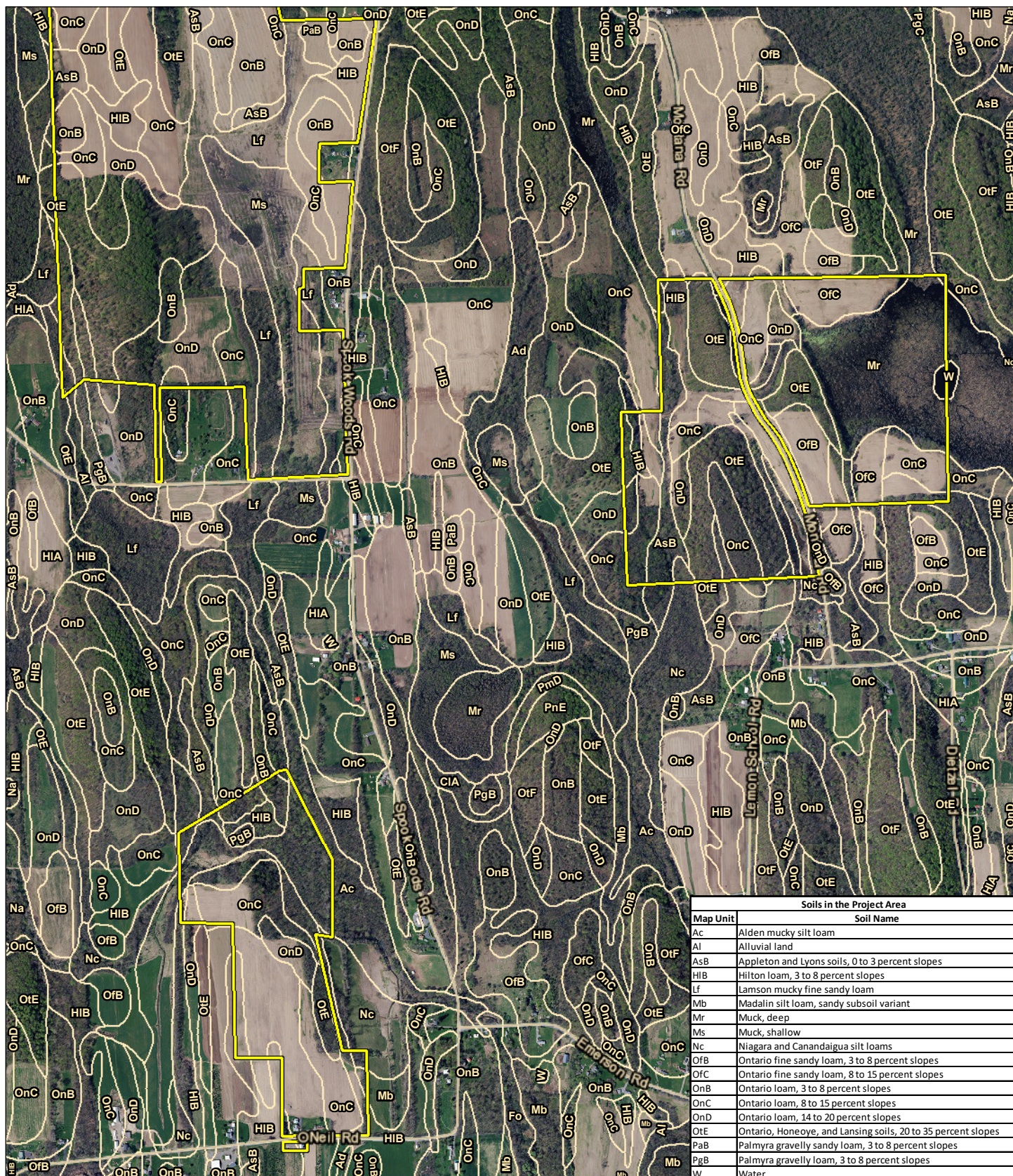
MAP LOCATION



MAPPED SOILS IN THE PROJECT AREA GARNET ENERGY CENTER, LLC TOWN OF CONQUEST SHEET 3 OF 4

FIGURE 8 | SEPTEMBER 2020

Map Produced by TRC



Soils in the Project Area	
Map Unit	Soil Name
Ac	Alden mucky silt loam
Al	Alluvial land
AsB	Appleton and Lyons soils, 0 to 3 percent slopes
HIB	Hilton loam, 3 to 8 percent slopes
Lf	Lamson mucky fine sandy loam
Mb	Madalin silt loam, sandy subsoil variant
Mr	Muck, deep
Ms	Muck, shallow
Nc	Niagara and Canandaigua silt loams
OfB	Ontario fine sandy loam, 3 to 8 percent slopes
OfC	Ontario fine sandy loam, 8 to 15 percent slopes
OnB	Ontario loam, 3 to 8 percent slopes
OnC	Ontario loam, 8 to 15 percent slopes
OnD	Ontario loam, 14 to 20 percent slopes
OfE	Ontario, Honeoye, and Lansing soils, 20 to 35 percent slopes
PaB	Palmyra gravelly sandy loam, 3 to 8 percent slopes
PgB	Palmyra gravelly loam, 3 to 8 percent slopes
W	Water

**MAPPED SOILS
IN THE PROJECT AREA**
GARNET ENERGY CENTER, LLC
TOWN OF CONQUEST
SHEET 4 OF 4

FIGURE 8 | SEPTEMBER 2020

Map Produced by